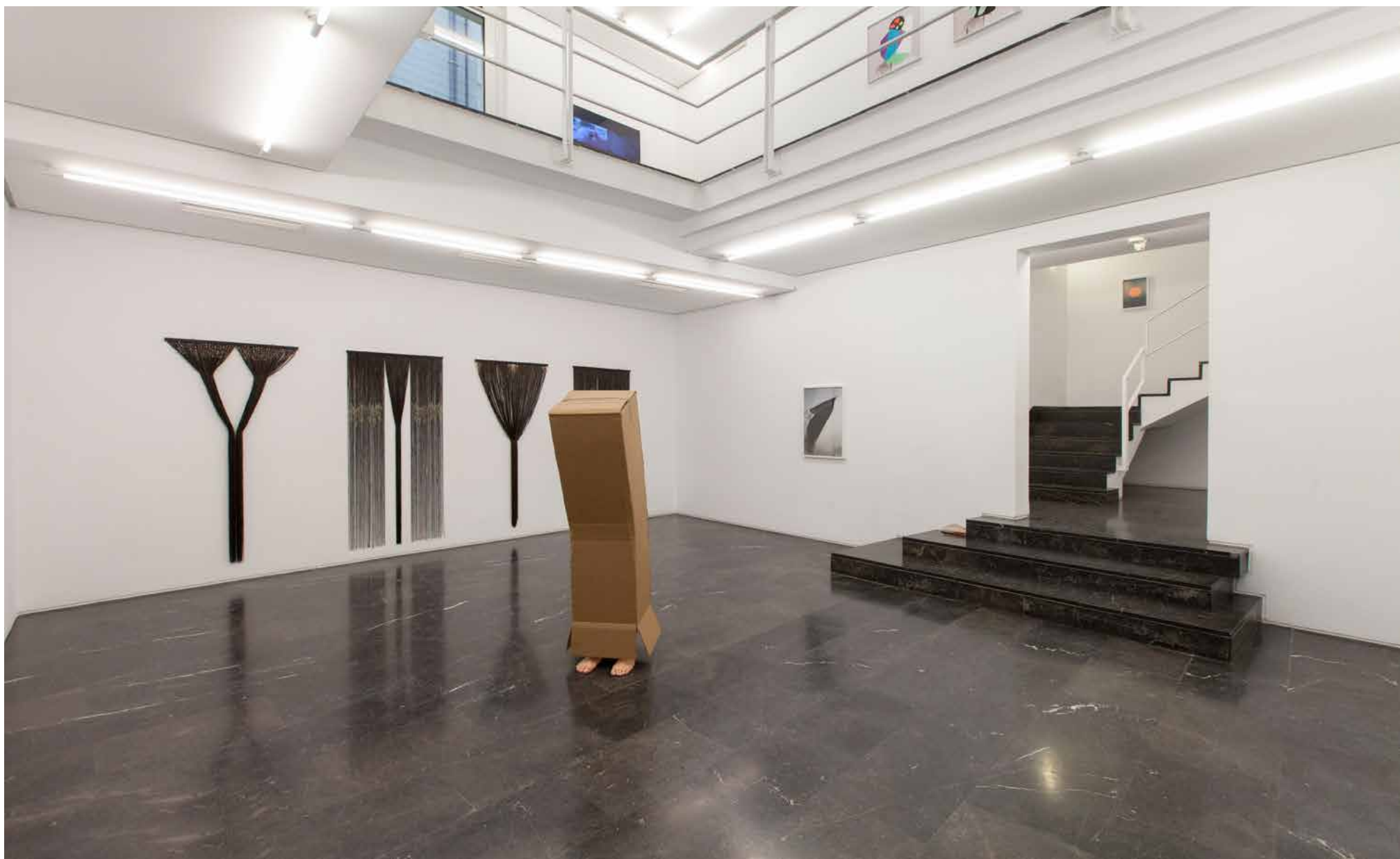


CALL XVIII

Simone Bailey (USA), Alejandro Botubol (ES),
Florencia Caiazza (ARG), Carlos Correcher (ES),
Iñaki Domingo (ES), Ana Esteve (ES), Sejma Ferré
(SRB), Alejandro Ginés (ES), Daniel Jordán (ES),
María León (ES), Sali Muller (LU), Elia Núñez (ES),
Hilde Onis (NL), Martín Piolatti (ARG), Manel Ros
(ES), Rosa Rubio (ES) y Jesús Eloy Sánchez (ES).

V L
L A



CALL XVVIII
Room 1. General view



Daniel Jordán. *The Fool Show XII*, 2016
Cardboard, wood, polyurethane foam, oil, packing tape.
162 x 50 x 50 cm



María León. *Emit ni tsol lost in time*, 2014
Curtain and newspaper. 90 x 200 cm, 4 units

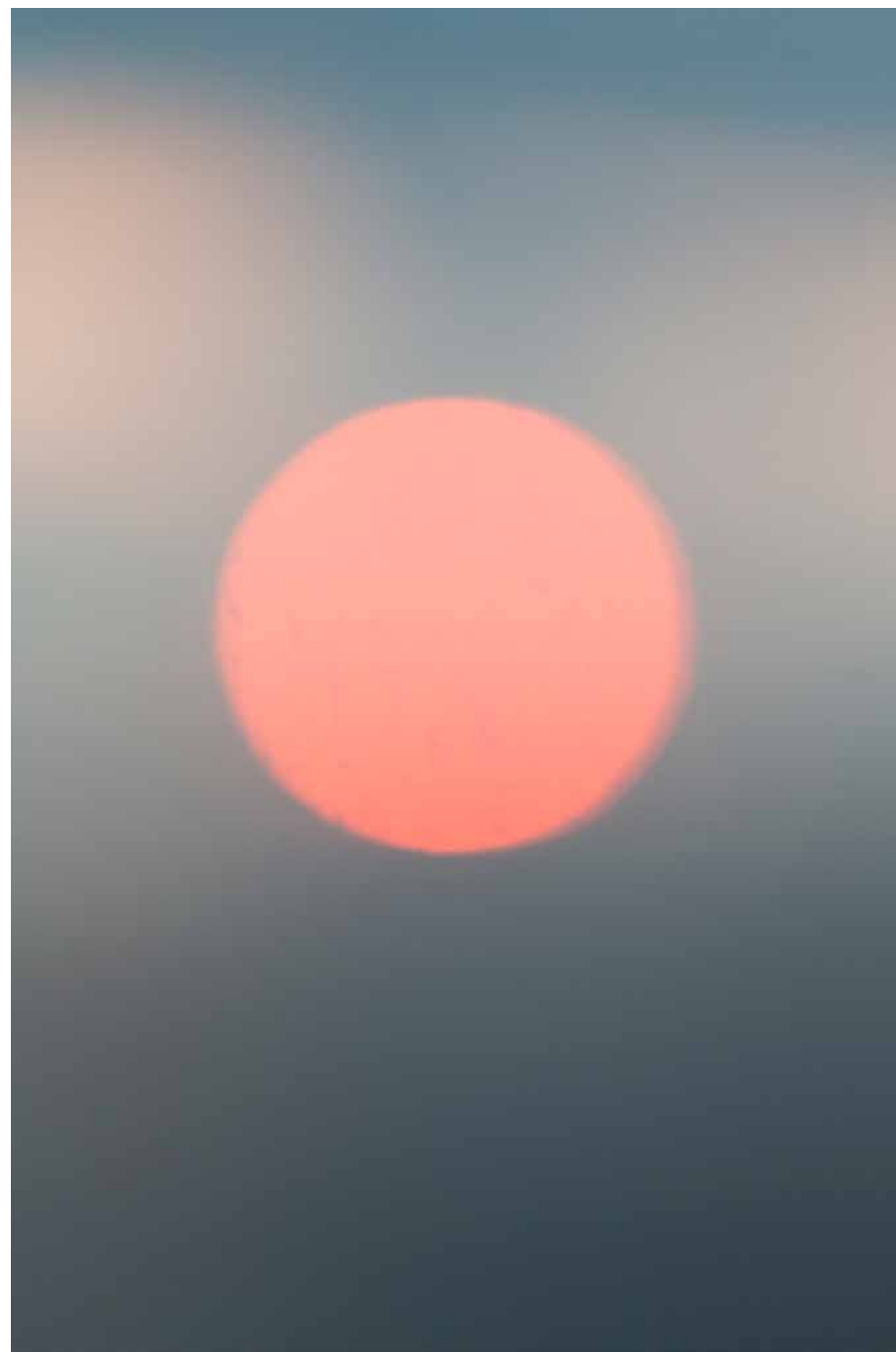


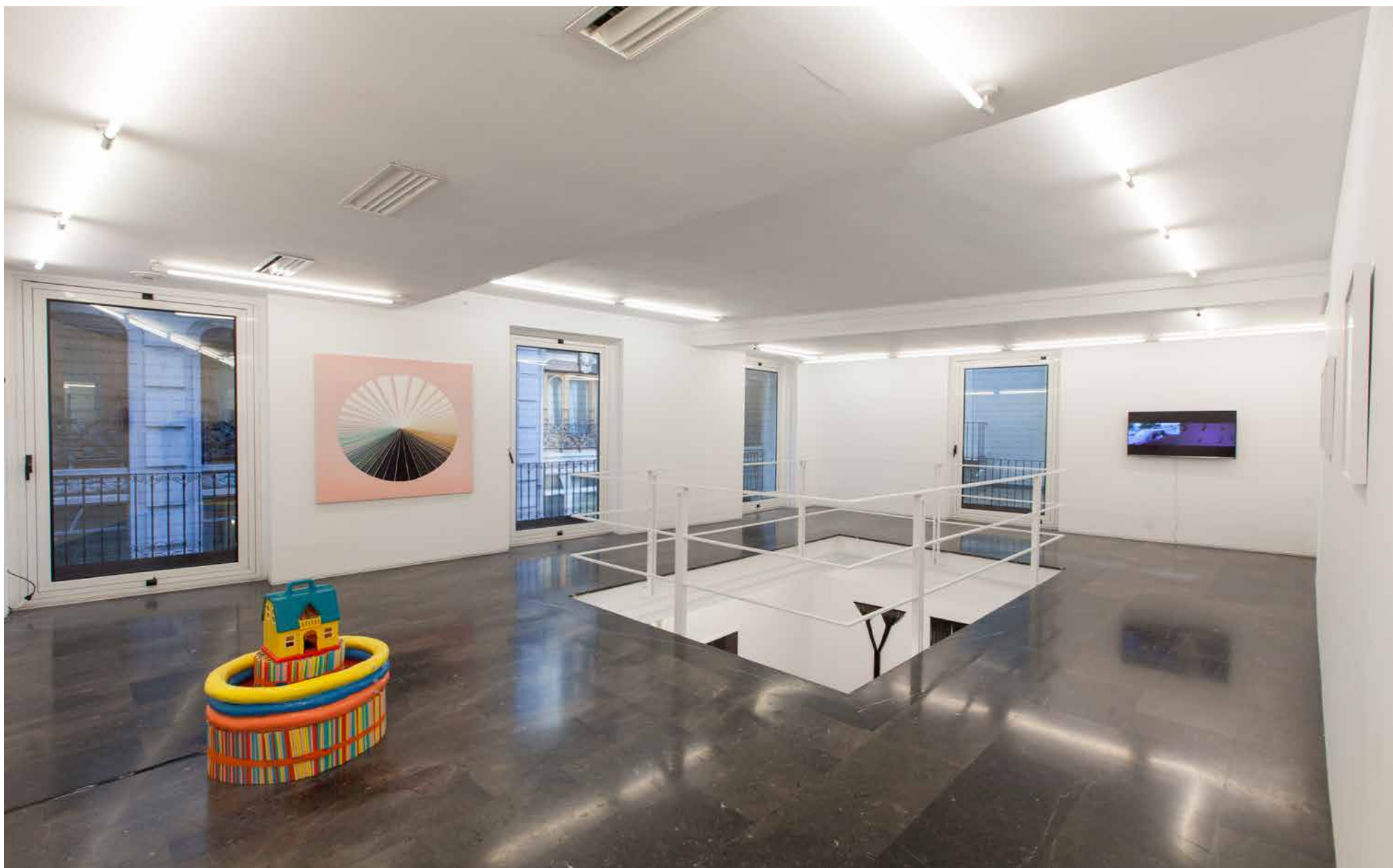
Iñaki Domingo. *Somewhere to Nowhere* Series, 2013 / 2015
Photograph. 60 x 40 cm / 80 x 53,3 cm



Iñaki Domingo. *Somewhere to Nowhere* Series, 2013 / 2015
Photograph. 120 x 80 cm

Iñaki Domingo. *Somewhere to Nowhere* Series, 2013 / 2015
Photograph. 40 x 26,7 cm

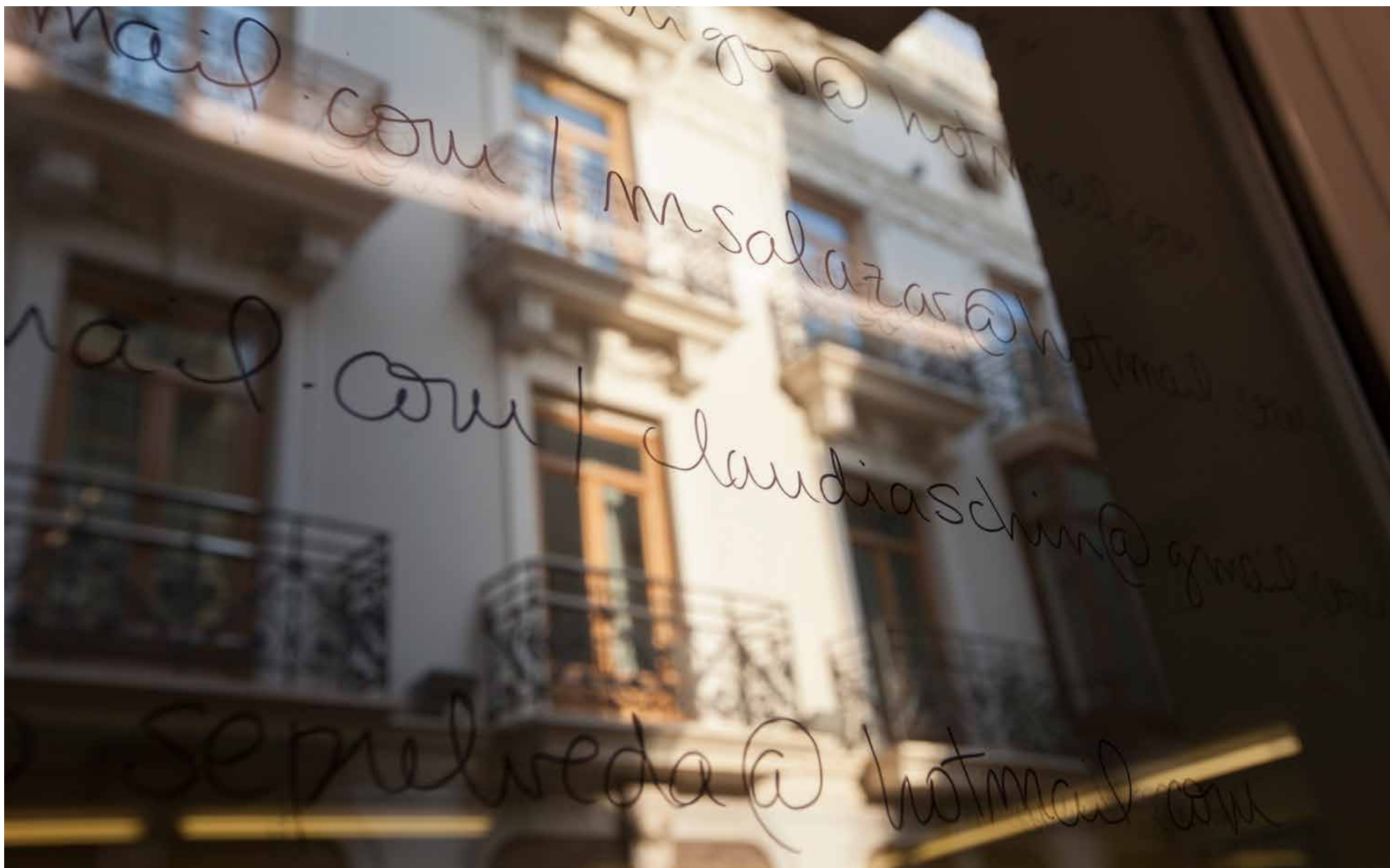




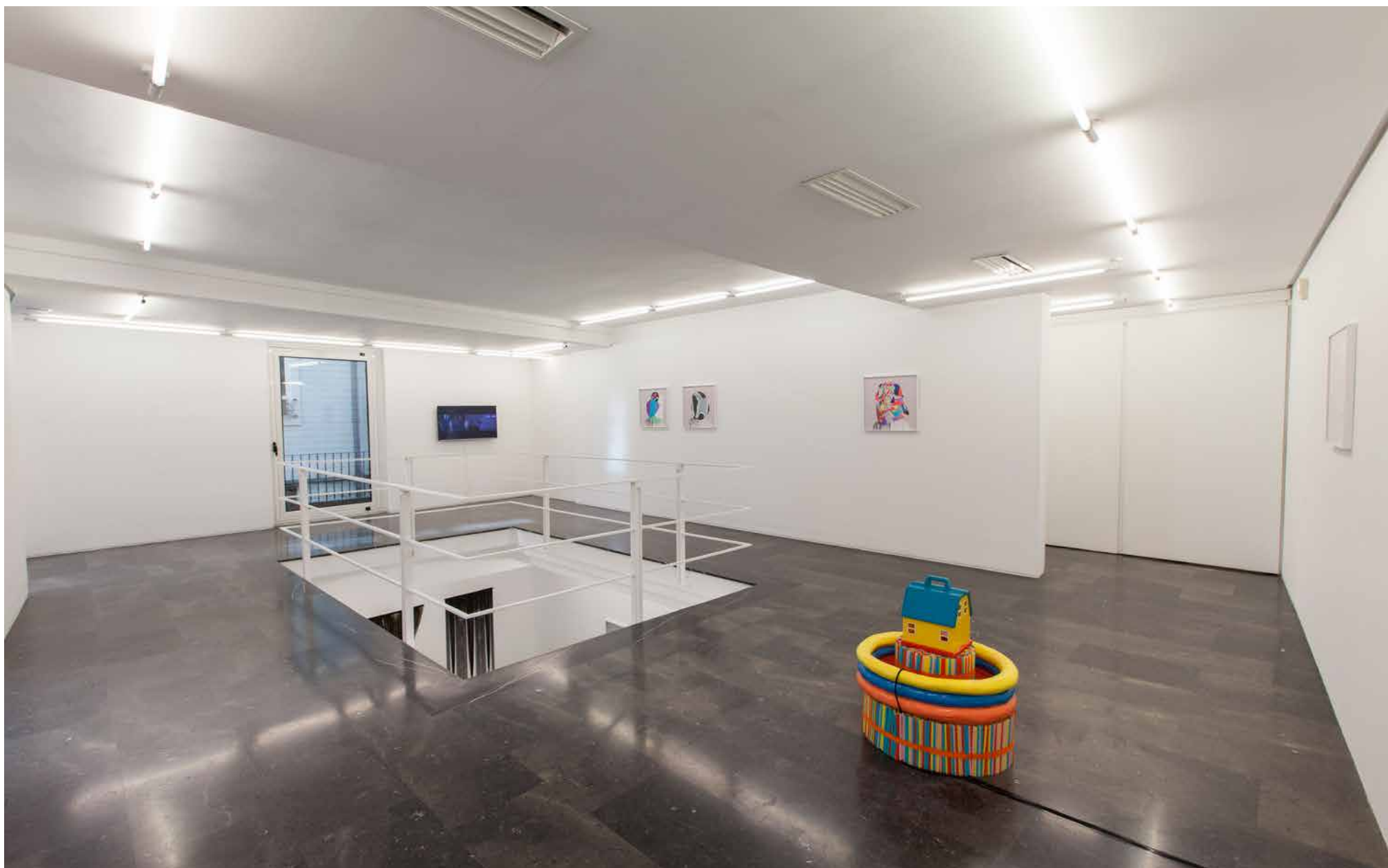
CALL XVVIII
Room 2. General view



Hilda Onis. *45 kg of Sweet, Backbreaking Adolescence*, 2015
Ceramics, plastic, fabric, lemonade. 120 x 80 x 80 cm



Elia Núñez. *Nosotros: extrañas inconsistencias*, 2016
Pen and window. Variable dimensions



CALL XXVIII
Room 2. General view



Jesús Eloy. *WE*, 2016
Photograph. 60 x 60 cm



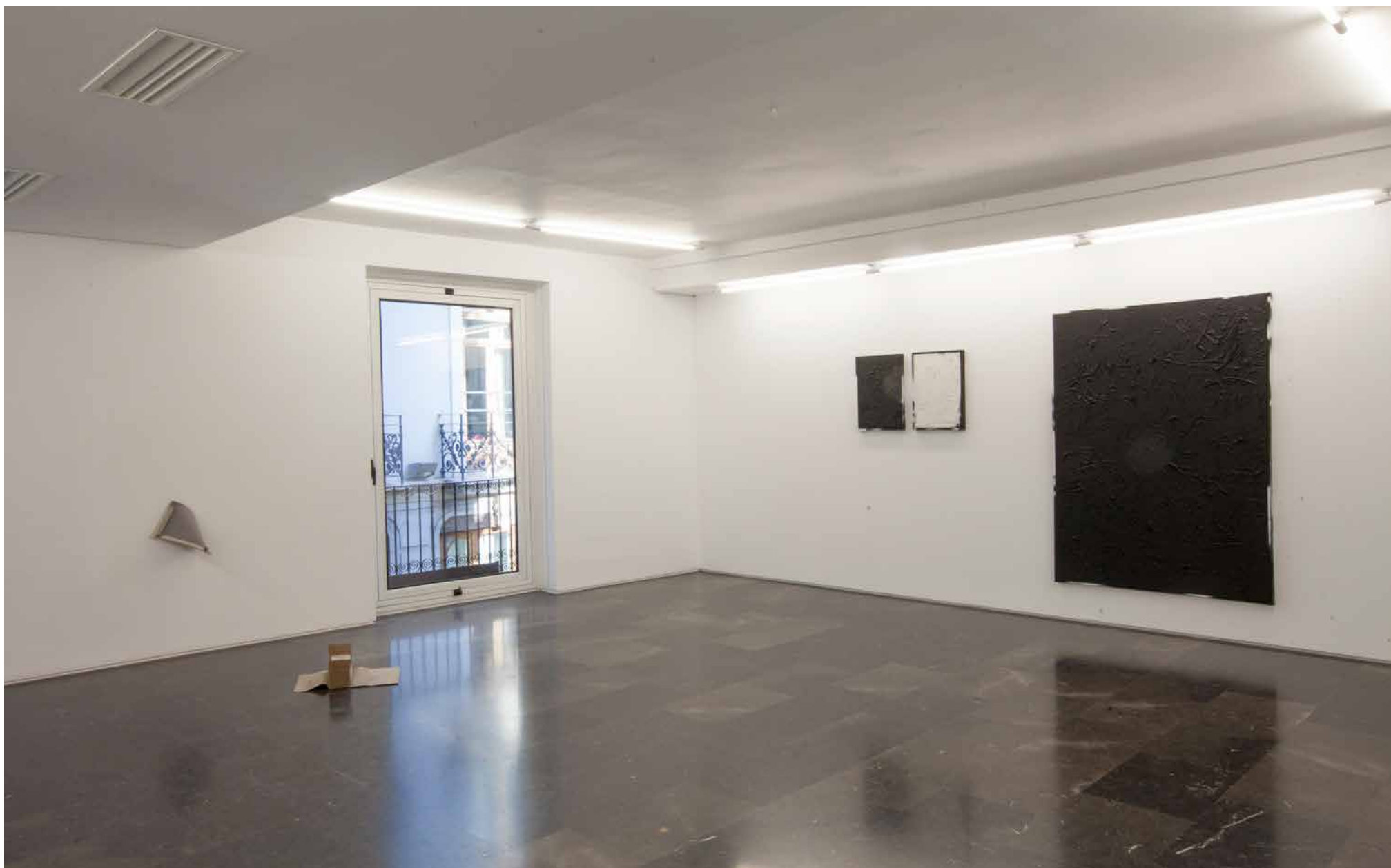
CALL XVVIII
Room 3. General view



Alejandro Ginés. *Serie Plan de fuga*, 2015
Mixed technique. Variable dimensions. 3 units



Rosa Rubio. *Paisajes de Clan*, 2016
Recycled fabric of mattress, wood, red clay, thread. 150 x 3 x 120 cm



CALL XVVIII
Room 3. General view



Florencia Caiazza. *Untitled*, 2016
Cement and carpeting. Variable dimensions



Martín Piolatti. *White Trash Series*, 2015
Gesso, acrylic, spray on canvas and wood. 63 x 43 cm



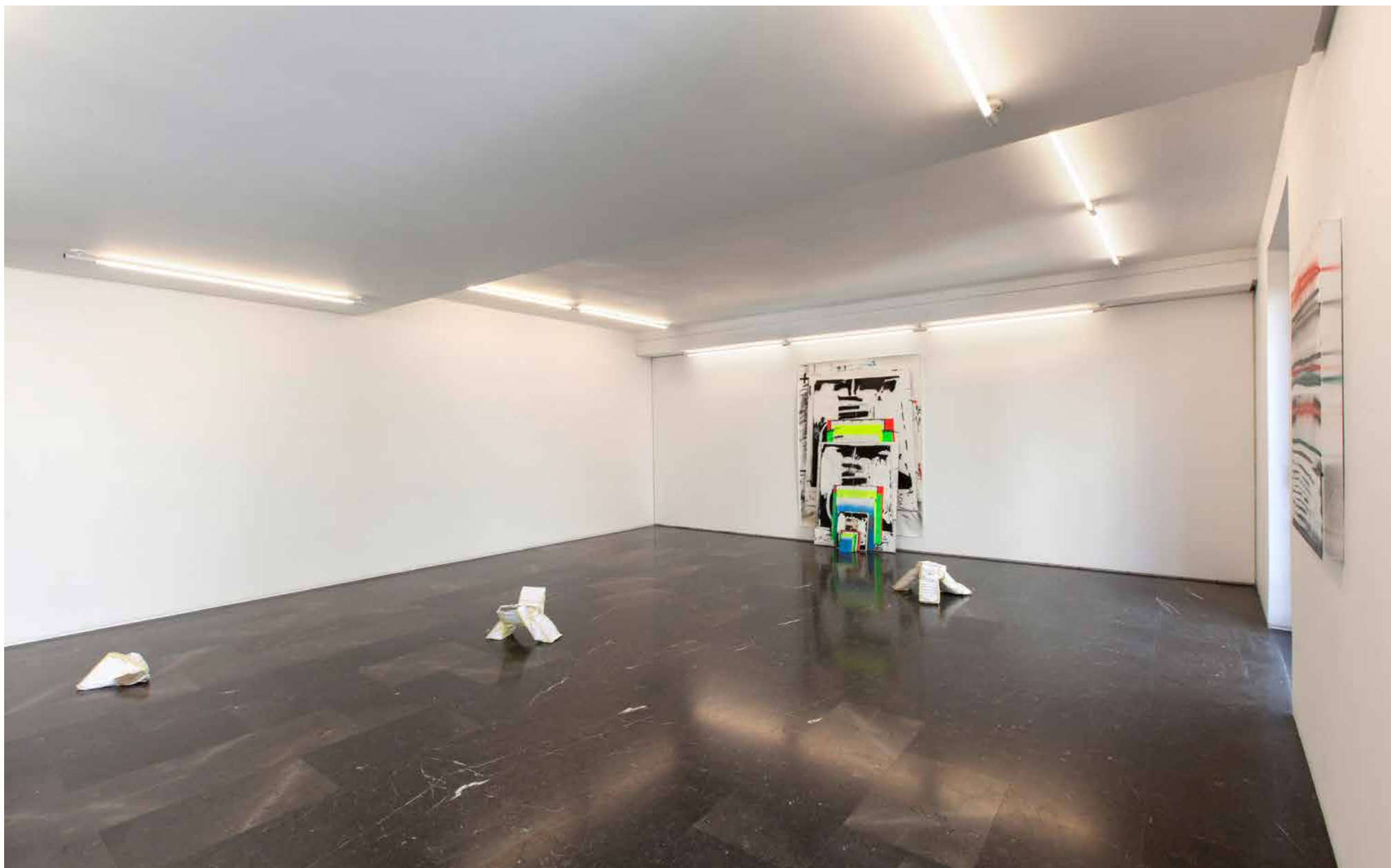
CALL XXVIII
Room 3. General view



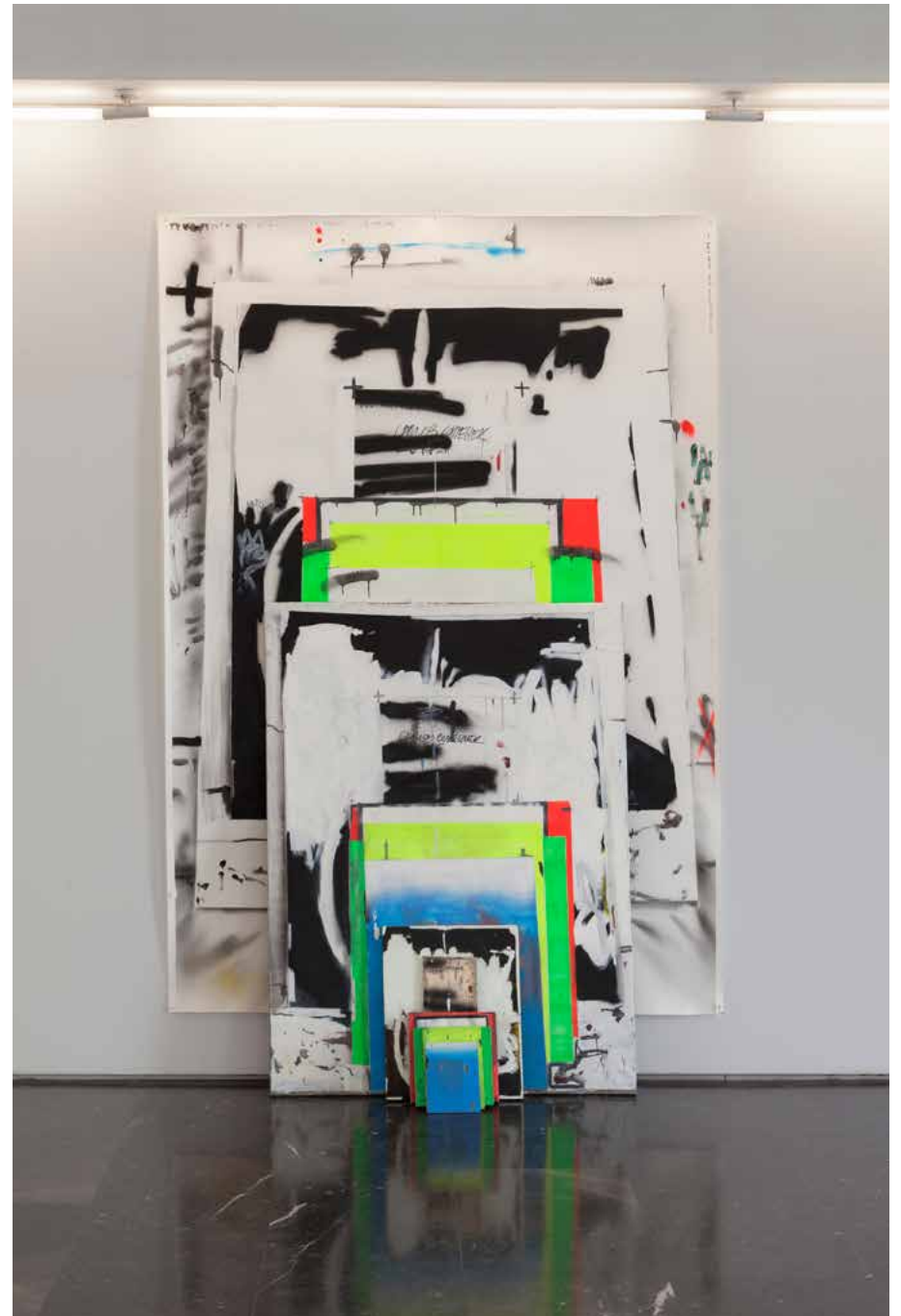
Sali Muller. *The Imperceptible Self*, 2016
Sound-installation, scratched mirror, sound pod. 60 x 80 cm



Manel Ros. *Broken Faces Series*, 2014
Collage. 30 x 40 cm / 50 x 70 cm



CALL XXVIII
Room 4. General view



Carlos Correcher. Ultra-positive II, 2016
Paper, spray, marker and oil on canvas and board. 215 x 151 x 50 cm



Florencia Caiazza. *Untitled*, 2016
Cement, paper and tape. Variable dimensions



Carlos Correcher. *VOID*, 2015
Acrylic and spray on table. 30 x 40 cm



Simone Bailey. *Aiming at the Sky*, 2012
HD video. 02:02 min

Luis Adelantado
Valencia

Bonaire, 6
46003 VALENCIA. Spain
T: (+34) 963 510 179
info@luisadelantado.com
www.luisadelantado.com