

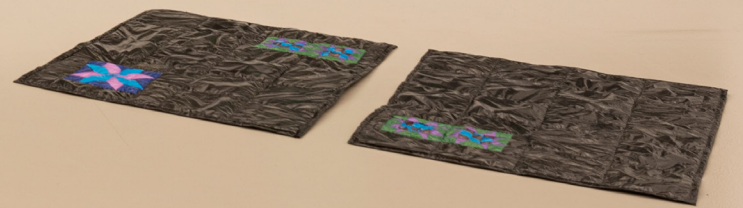
Bajo el cielo de la noche
Elisa Pardo Puch

Luis Adelantado
Valencia

Bonaire, 6
46003 VALENCIA. Spain
T: (+34) 963 510 179
info@luisadelantado.com
luisadelantadovlc.com

Bajo el cielo de la noche

Nobody has been seen near that door for over five years. Five years in which that lock has barely been touched. She had always imagined what was on the other side but it was only that: pure imagination. For decades it housed a small clandestine sewing workshop which served as a refuge for women who used yarns and fabrics to build parallel universes, private worlds that others had made their own. She was obsessed by that way of making compositions in which different colours were coupled together automatically. Blue alongside black, green next to yellow, orange with purple and so on, one after another.





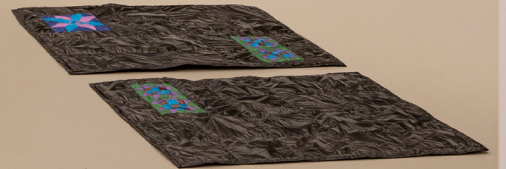
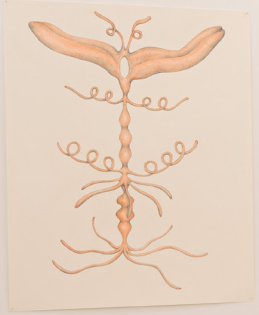
0953-0001
Elisa Pardo Puch
S/t (Patchwork), 2023
Plastic, jean, cotton thread
and wadding.
600 x 112 cm

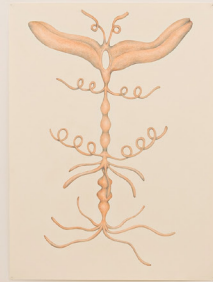


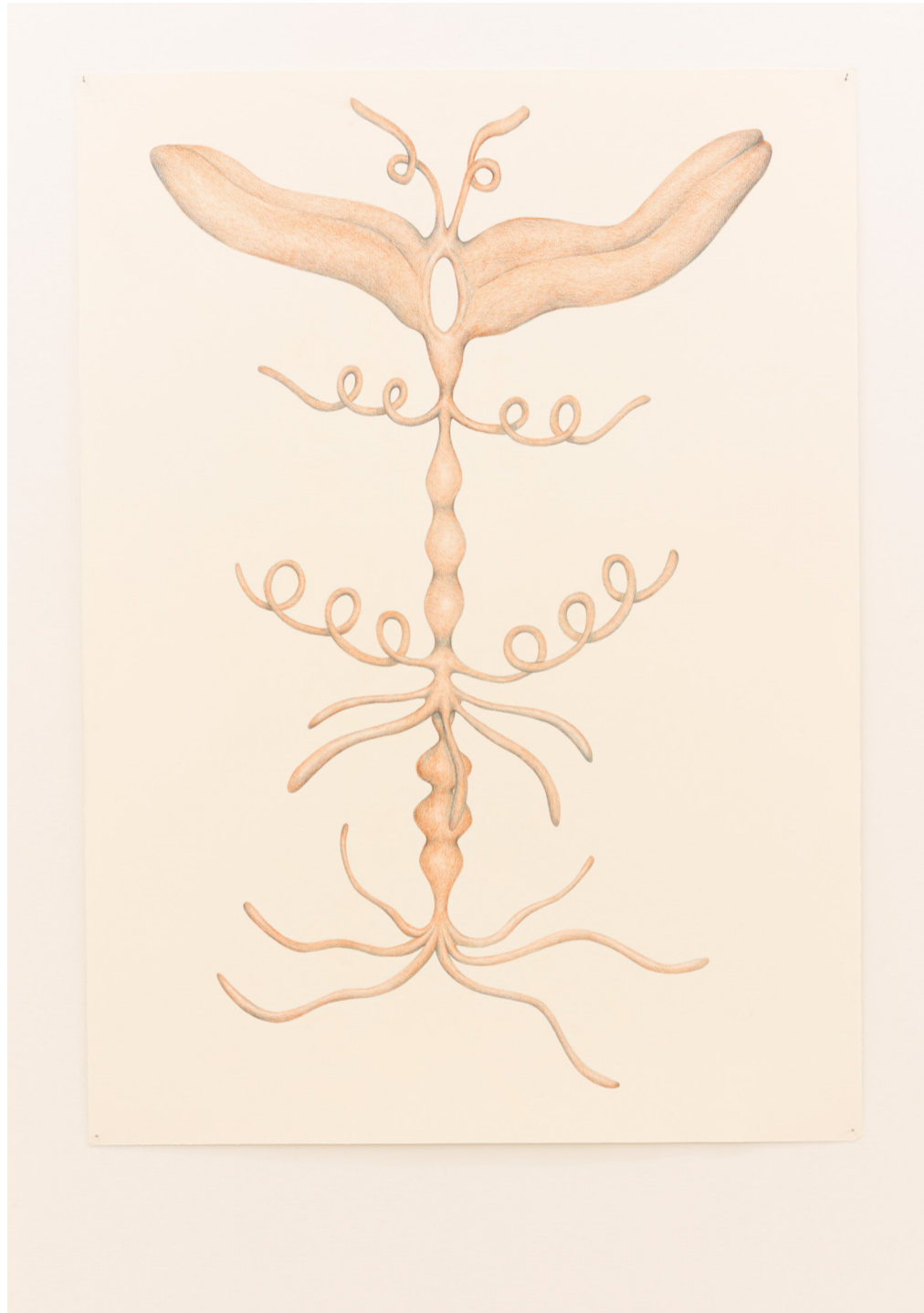


0953-0006
Elisa Pardo Puch
Primera parte del sueño, 2023
Plastic, cotton thread and wadding.
70 x 56 cm

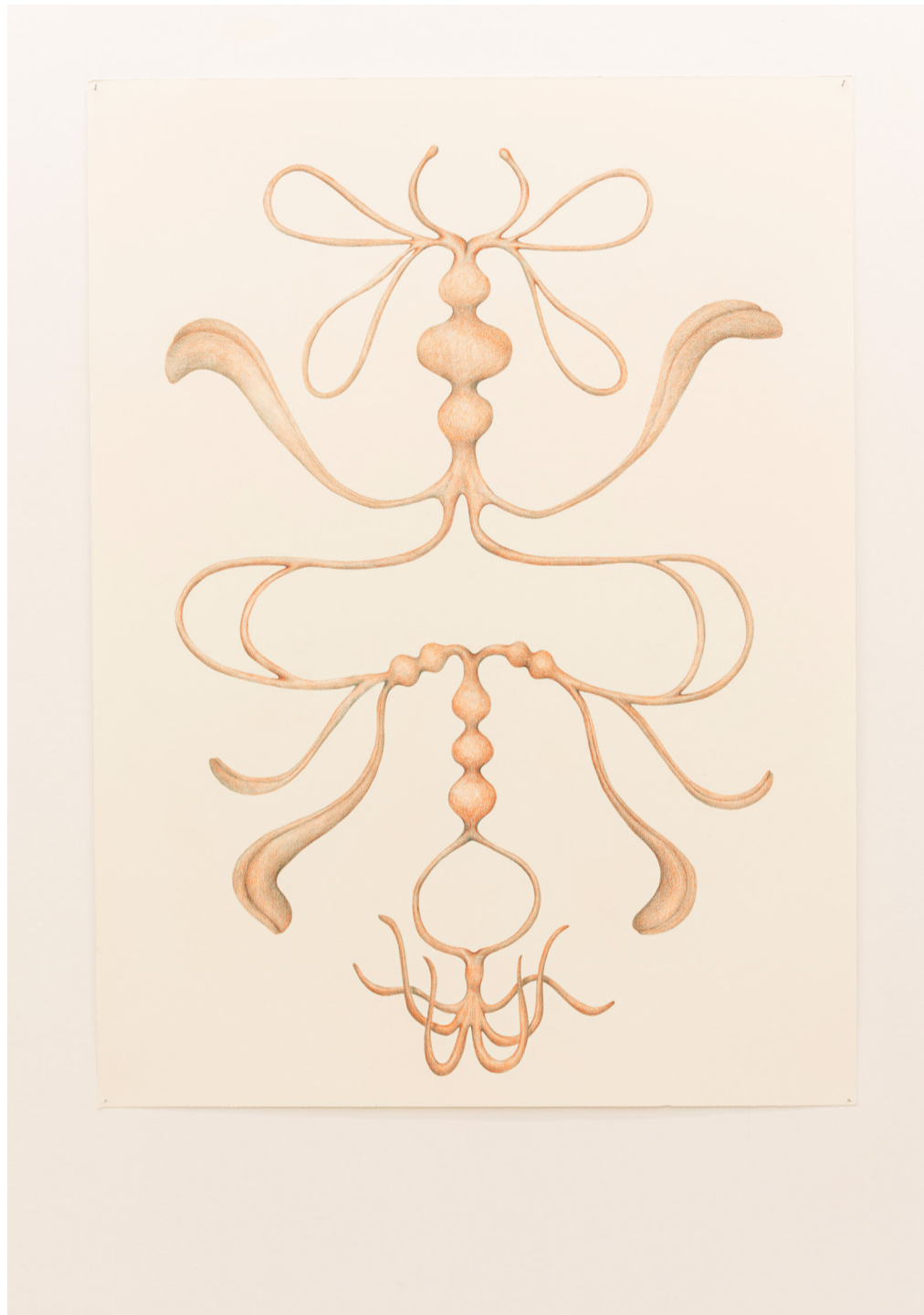
0953-0009
Elisa Pardo Puch
Segunda parte del sueño, 2023
Plastic, cotton thread and wadding.
70 x 56 cm





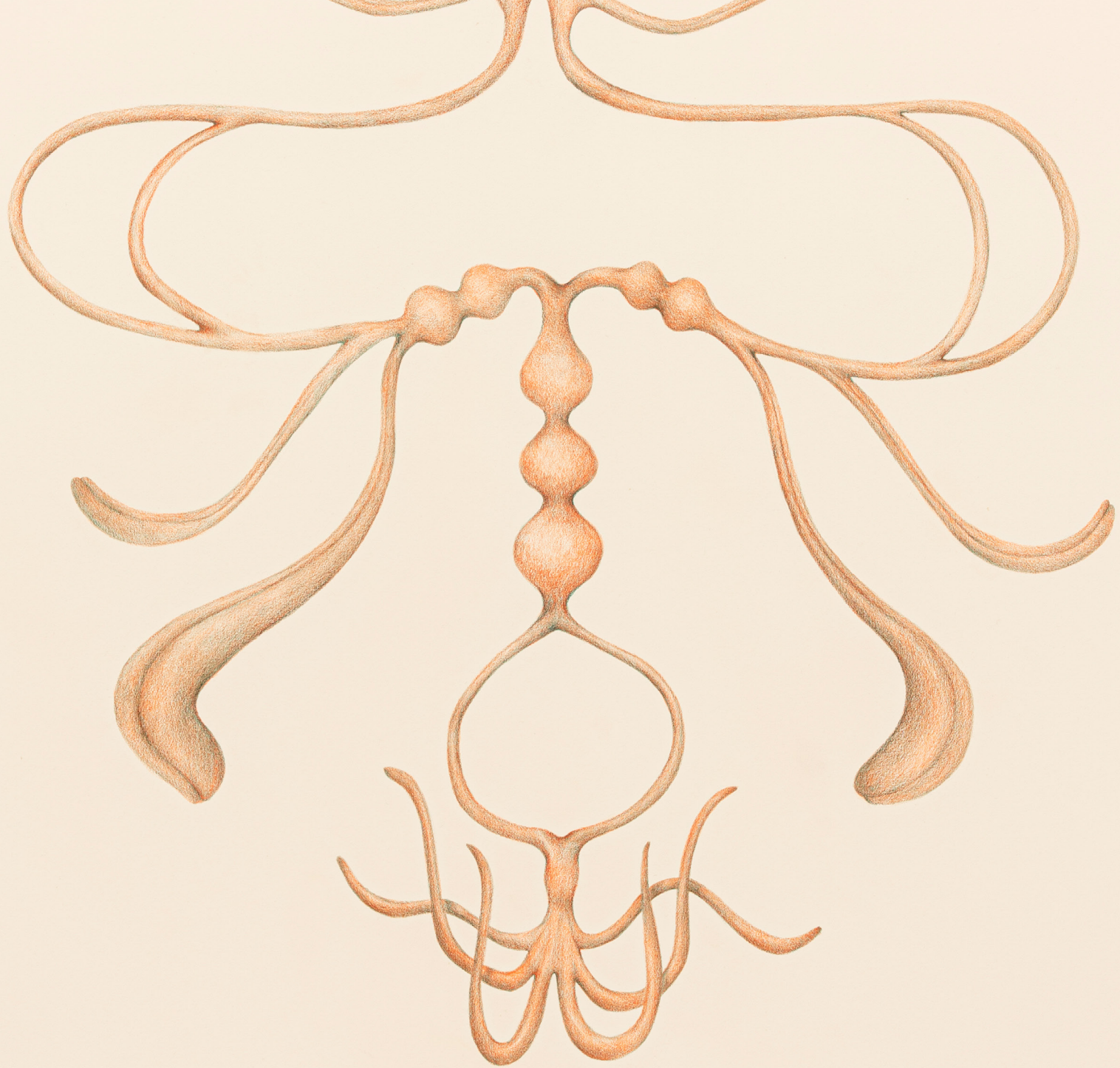


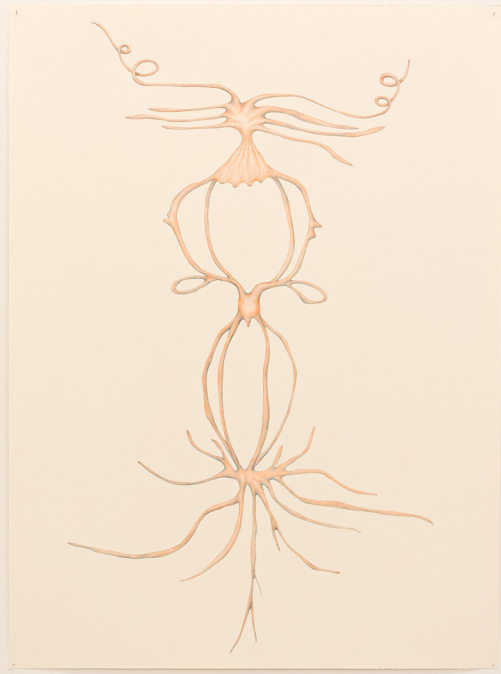
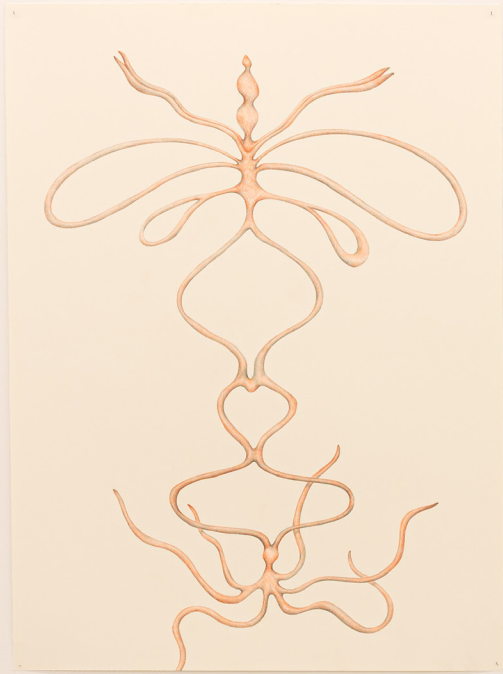
0953-0002
Elisa Pardo Puch
Sueño I, 2023
Pencil on paper.
106 x 80 cm

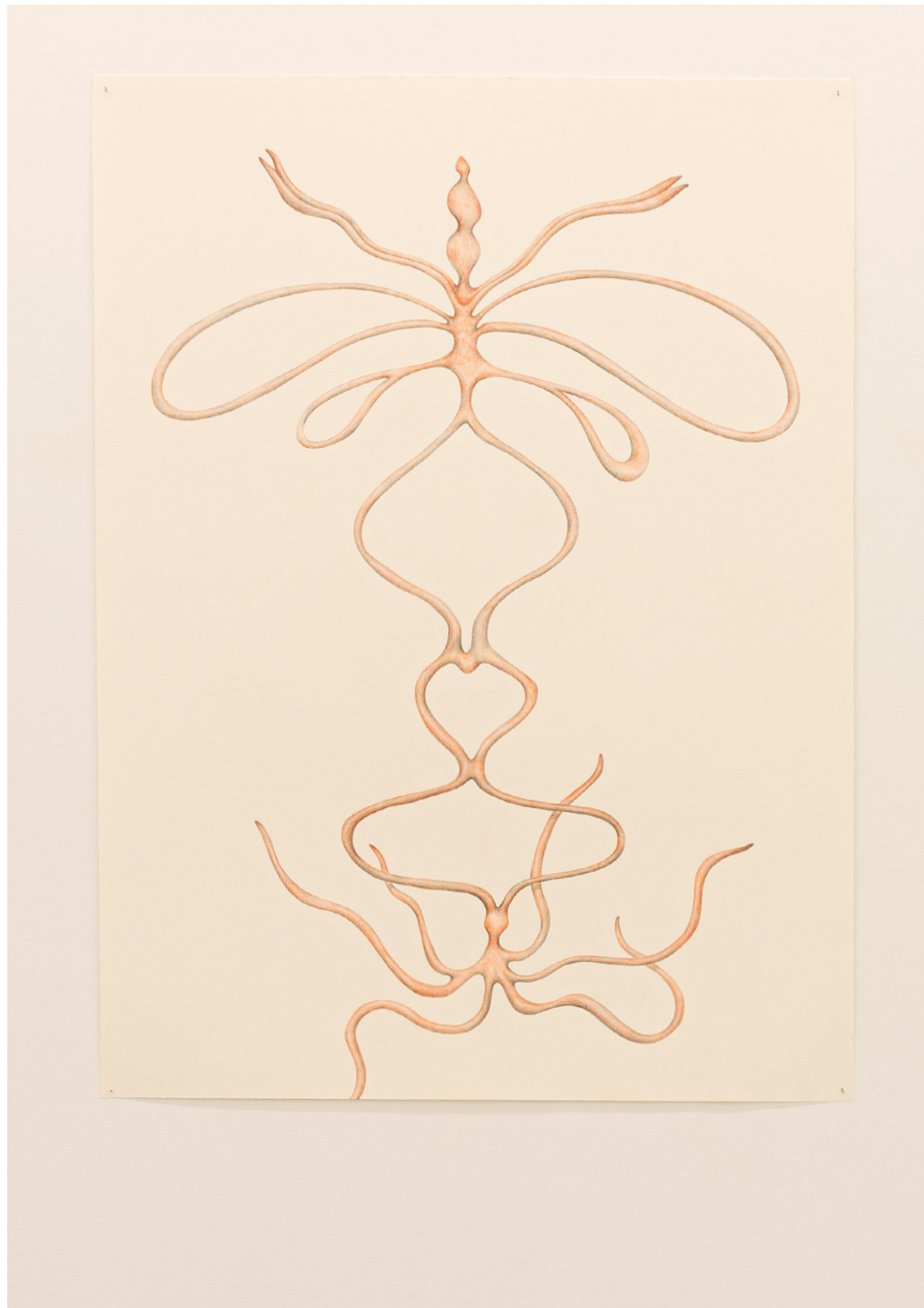


0953-0008
Elisa Pardo Puch
Sueño V, 2023
Pencil on paper.
106 x 80 cm

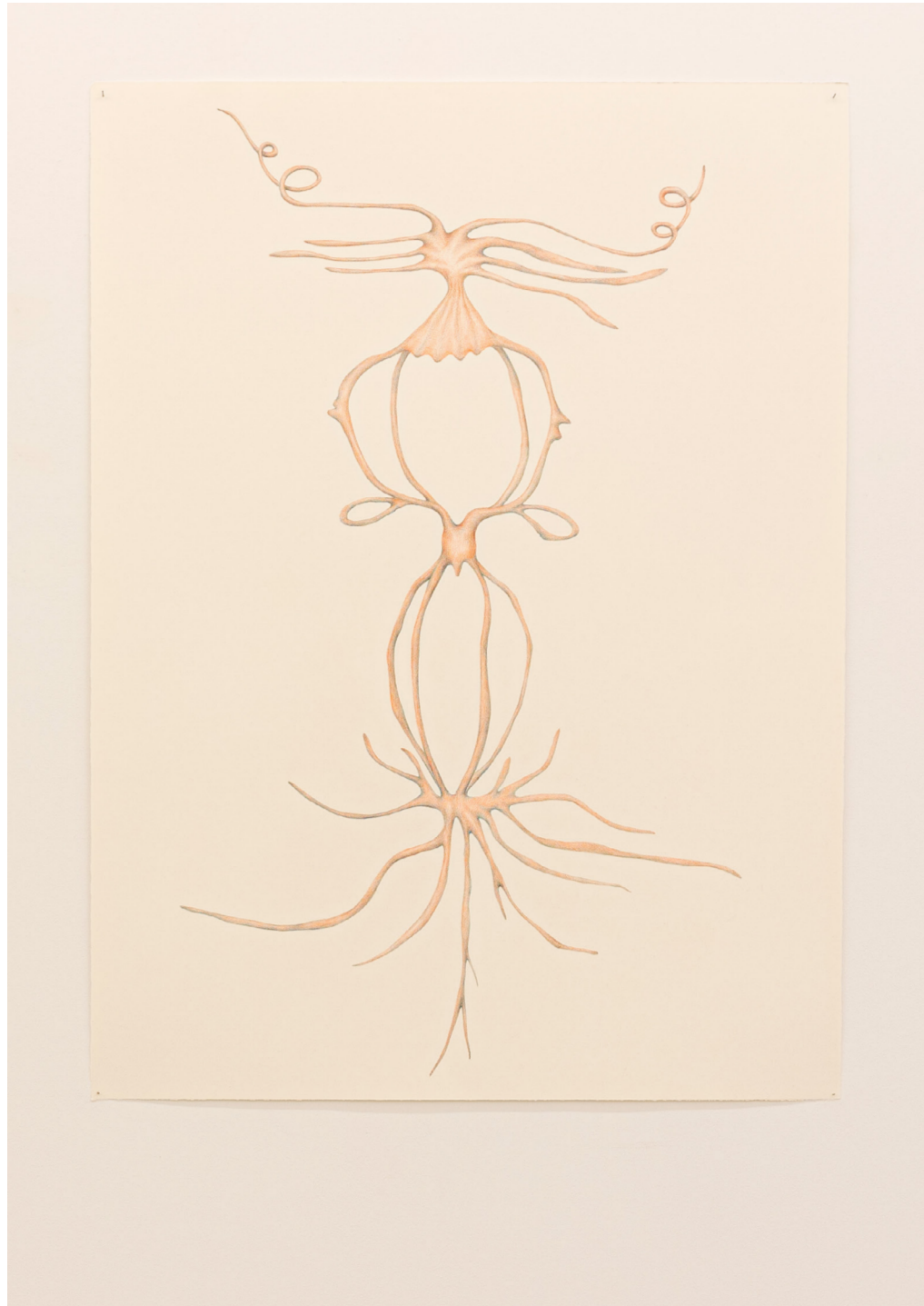








0953-0005
Elisa Pardo Puch
Sueño II, 2023
Pencil on paper.
106 x 80 cm



0953-0004
Elisa Pardo Puch
Sueño III, 2023
Pencil on paper.
106 x 80 cm



0953-0003
Elisa Pardo Puch
Composición de patchwork, 2023.
Plastic, cotton thread and wadding.
85 x 42 cm

Bajo el cielo de la noche
Elisa Pardo Puch

For more info contact:
Olga Adelantado
olga@luisadelantado.com

Luis Adelantado
Valencia

Bonaire, 6
46003 VALENCIA. Spain
T: (+34) 963 510 179
info@luisadelantado.com
luisadelantadovlc.com

